

1000 books sets platform for life

Ashburton Library is launching a fun, new programme aimed at reading to young children.

The 1000 Books Before School programme is a collaboration between the library and Ashburton Altrusa, and it encourages regular reading to babies and toddlers in the years before they start school.

Library manager Jill Watson said all kinds of reading counted, from picture books and eBooks to bedtime storytelling and songs. "It doesn't matter if you read the same rhyming book 10 times in a row, it all counts and helps form a fabulous habit of lifelong reading."

Several other libraries in New Zealand have similar programmes and Ashburton Library staff contacted Ashburton Altrusa to see if they would be interested in helping establish one here. Altrusa members already deliver books to homes as part of the library's Books on Wheels programme.

Altrusa president Val Prendergast said the club was delighted to partner with the library, as it also had a goal to improve literacy.

"Improving reading and writing helps open up opportunities for everyone, and 1000 Books Before School is a programme that starts with infants and toddlers and lays a great foundation for reading."

As part of its support, Altrusa has covered the cost of printing the first batch of booklets used to track progress to the 1000 books target.

To register for 1000 Books Before School, caregivers and children must be library members. They will receive the booklet and library bag, and can collect reading



milestones along the way.

Miss Watson said a target of 1000 books was achievable and the library had books to suit all ages, reading abilities and interest.

"If you read one book a day for five years, that's 1825 books, or one book a day for three years is 1095 books, so it is definitely achievable, and you'll be forming a love for reading from an early age."

Speech and language therapist Ellie Barns said reading to children in their early years was important in developing communication skills, as well as literacy.

"Books are great for building early joint attention skills, gestures and signs such as pointing and vocabulary development. They are also great for teaching and creating opportunities for the child to learn and use communication for multiple purposes such as sharing interests, questioning, commenting and the like."

The 1000 Books Before School programme will be launched at the library's Wiggle and Read session on Tuesday 25 June, at 10.30am.



CE Hamish Riach Voting, parks and good reads

The wheels of Council business rarely stop and in the community engagement space, the Long Term Plan has moved aside for two other documents we have out for consultation.

The Representation Review is a compulsory six-year look at how many councillors we should have around the table and who they represent. We think the current arrangements are working well, but are proposing changes for the Methven Community Board.

The recommendation is for the board's boundaries to be expanded to cater for Methven town's growth, but that the number of elected board members drops from five to four.

This is something that the people of Methven may feel strongly about, and I urge them to read the consultation

document at [ItsOurPlace.nz](https://itsourplace.nz) and tell us what they think.

The other document out for consultation is the Reserve Management Plan, which gathers all the plans we have for 121 parks and reserves around the district.

It's a big volume of work, and you may want to comment on the park or reserve that is special to you.

Other Council work is cyclical and right now our Open Spaces team is dealing with leaf litter in our green spaces, while contractors deal with leaf litter on our roads and footpaths. We have a special team checking out the internal condition of sewer pipes, to inform renewal work in the future, and our Customer Service team is bracing for dog registration month in July.

A special project that our library staff

have been working on will also come to fruition later this month – it's called 1000 Books Before School and the aim is to encourage regular reading to babies and toddlers in the years before school.

Those who take part in the programme will have a booklet to chart their progress, with milestones every hundred books.

The definition of a book is generous – it can be a picture book, a song, an eBook, or a nursery rhyme. It can be the same book read over and over, like the Hungry Caterpillar, Hairy Maclary from Donaldson's Dairy or, one of my favourites, The Duck with No Luck.

One book a day for five years will set your child up for life.



SHORT AND SWEET

TLC FOR BRIDGE

Light maintenance is planned for the SH1 Ashburton River bridge this Sunday (16 June) with stop/go traffic management in place from 7am until 8am. Contractors will be fixing a street light on the western side of the bridge, and the whole structure will be swept while traffic is being controlled.

DRIVER TESTING

Council is proposing a remit for Local Government New Zealand to consider at its annual conference in August. It wants LGNZ to facilitate discussion between central and local government about the excessive wait times associated with the graduated driver licensing system. Demand for testing currently exceeds testing capacity, with young people waiting months to sit or re-sit driving tests. Council is advocating for a review of the fee structure and additional testing centres.

COOK ISLANDS

Join us at the Ashburton Art Gallery and Museum on Tuesday 18 June for a cultural awareness talk showcasing the Cook Islands! You'll learn about Cook Islands culture and discuss basic social protocols to help you interact with clients, parents, and friends. Tanya Pere, a member of the local Cook Islands community, will lead the discussion. The session runs from 10.30am-12pm.

GLOW WINNER

Thank you to the 553 people who took part in our Glow in the Park online survey! Our lucky winner was Julie, who came in a party of seven from Rolleston. She wins a voucher to the Opuke Thermal Pools and Spa at Methven.

SEWING POPULAR

Sewing classes in the Makerspace at the Ashburton Library have been very popular this month, so popular we've had to start a wait list. Class sizes are limited to six and we're planning more to cater for sewers of all abilities. Keep an eye on the library's Facebook page for details.

Looking after our local parks

Council is encouraging residents to provide their feedback on a draft plan for managing Ashburton District's 121 parks and reserves.

The Draft Reserve Management Plan sets out how local parks and reserves will be managed, what activities they'll cater for and what facilities will be provided.

The plan has five volumes, each focused on a particular topic or area, ranging from general principles to specific policies for individual reserves.

Group Manager Infrastructure and Open Spaces, Neil McCann, says Council is keen for people to have their say on any part of the draft plan. "You don't need to comment on all the volumes, there might just be one particular section or park that interests you and we'd love to hear what you think."

The draft plan was prepared following early community engagement last year. Mr McCann said the feedback highlighted the immense value that locals place on the district's green spaces. "The consistent message we heard was that people love their local parks and want to see them kept tidy and well maintained."

Submitters also supported more tree planting, with a focus on native species, and were keen to see



playgrounds upgraded and become more inclusive, especially for those with limited mobility.

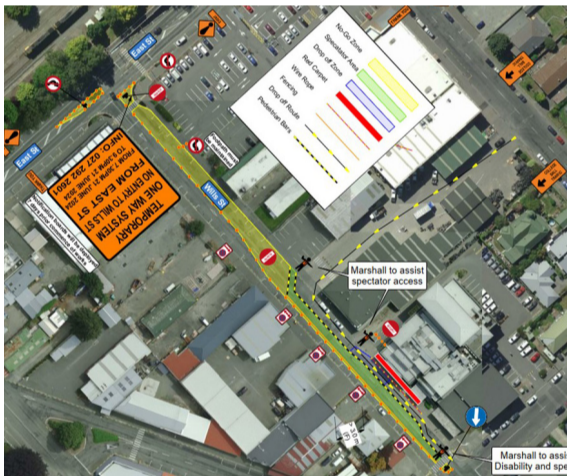
Mr McCann said the Council had also sought input from the district's reserve boards, sports groups and other park users.

"All of this feedback has helped create a plan that reflects the needs of our community, however it's still a draft and people now have another chance to have their say before the final plan is adopted by Council."

People can view a map of the reserves and provide their feedback online at itsourplace.nz or grab a paper feedback form from Te Whare Whakatare.

Submissions close Sunday 4 August.

One-lane closure for college ball



The east-bound lane of Wills Street will be closed to traffic for two hours on Friday 21 June for the annual Ashburton College ball being held at the Ashburton Event Centre.

The lane will be closed from East Street to Cass Street from 7.30pm to 9.30pm. No parking will be available on either side of the street.

Ball-goers and their vehicles will access the event centre via Peter Street and a lane-way through Neumann's Tyres onto Wills Street. Spectators will be contained in a safe viewing space next to the drop-off area for ball-goers.

The traffic management has changed from last year and people going to the event will be directed by marshals.

Time to be vocal about voting

It's time to be vocal about local once again in the Ashburton District Council's Representation Review, ahead of the next local body elections in 2025.

Council is proposing three main changes to the current arrangements, following initial talks with the community last year, and the review document is now out for consultation until 21 July.

Council currently consists of a mayor and nine elected councillors. The district has an Ashburton ward with five councillors, and eastern and western wards with two councillors each. The Methven Community Board represents urban Methven.

Group Manager Engagement and Democracy Toni Durham said Council was legally required to review representation arrangements every six years.

"Initial feedback did not signal major changes to current arrangements with 72% of respondents saying they felt the community is well represented by nine Councillors.

"But we're looking at widening boundaries to cater for growth and reducing the numbers of Methven

Community Board members to promote more contested elections."

The Ashburton Ward boundary is proposed to be expanded to include newly-developed residential areas off Trevors Road, on the eastern side of Ashburton.

The boundary for the Methven Community Board is proposed to expand to include properties on the south-western periphery of the current Methven Community Board boundary.

Also under the draft proposal, the number of elected Methven Community Board members could change from five to four.

This is because a total membership of six (including two Western Ward councillors appointed by Council) is considered to be fair and effective representation for a community of this size and will promote contested elections.

The easiest way to provide your feedback is online at itsourplace.nz, but paper forms are also available from Te Whare Whakatare.

It's doggy rego time

Dog registrations are on the way, so it's time to tell us if your details have changed.

- Have you got a new dog?
- Has your pet passed away?
- Have your address or contact details changed?

Visit ashburtondc.govt.nz/do-it-online or call us on (03) 307 7700

Public Notice

Dog Registration Fees 2024-25

	1 July 2023 - 30 June 2024	1 July 2024 - 30 June 2025
Dog registration fees		
Disability assist dogs	Free	Free
Micro-chip fee per dog	\$19	\$20
Rural dog (1-2)	\$66	\$70
Rural dog (subsequent)	\$31	\$33
Late registration penalty - rural	\$31	\$33
Menacing dog - rural	\$66	\$70
Dangerous dog - rural	\$99	\$105
Urban un-neutered dog	\$99	\$105
Urban de-sexed dog	\$66	\$70
Responsible dog owner - urban	\$60	\$64
Late registration penalty - urban	\$46	\$49
Menacing dog - urban	\$99	\$105
Dangerous dog - urban	\$148	\$158
Licence to keep 3 or more dogs - urban	\$54	\$57
Replacement tag	\$12	\$13
Impounding fees - dogs		
First offence	\$94	\$100
Second or more offence	\$233	\$250
Daily sustenance fee	\$18	\$19
Impounding fees - stock		
Stock call-out fee	\$135	\$144
Impounding fee per head	\$112	\$120
Daily sustenance fee	At cost	At cost

Jane Donaldson
Group Manager - Compliance & Development

ashburtondc.govt.nz

COUNCIL OFFICE

2 Baring Square East
Mon, Tue, Wed & Fri 8.30am-5pm
Thursday 9am-5pm

ASHBURTON LIBRARY

2 Baring Square East, Ashburton 7700
Mon & Fri 8.30am-6pm, Tue-Thu 8.30am-8pm
Sat & Sun 10am-4pm

EA NETWORKS CENTRE

20 River Terrace
Mon - Fri 6am-9pm (pools 7pm, gym 8pm)
Sat & Sun 7am-7pm (pools 5pm, gym 6pm)

ASHBURTON ART GALLERY & MUSEUM

327 West Street
10am-4pm daily (late night Wed)