

Sourced from the LINZ Data Service and licensed for re-use under the Creative Commons Attribution 4.0 New Zealand licence



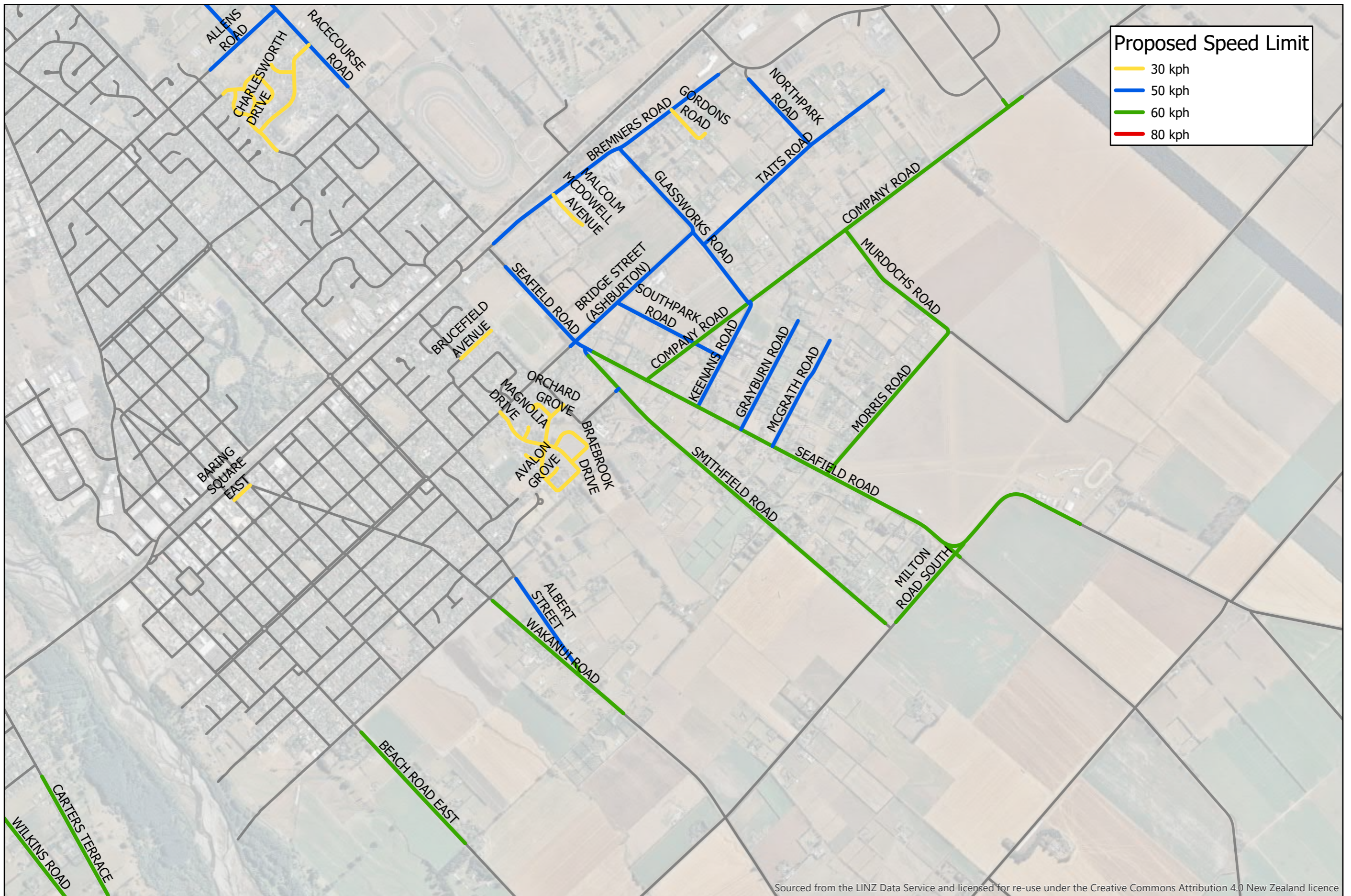
Speed Limits Review: Ashburton West

Scale 1:10,000
At A3

Disclaimer Note:

Sourced from the LINZ Data Service and licensed for re-use under the Creative Commons Attribution 4.0 New Zealand license. The information supplied in this image is sourced from information held by Ashburton District Council. It is supplied in good faith but its accuracy or completeness is not guaranteed.





Sourced from the LINZ Data Service and licensed for re-use under the Creative Commons Attribution 4.0 New Zealand licence



Speed Limits Review: Ashburton East

Scale 1:20,000
At A3

Disclaimer Note:

Sourced from the LINZ Data Service and licensed for re-use under the Creative Commons Attribution 4.0 New Zealand license. The information supplied in this image is sourced from information held by Ashburton District Council. It is supplied in good faith but its accuracy or completeness is not guaranteed.



Proposed Speed Limit

- 30 kph
- 50 kph
- 60 kph
- 80 kph



Sourced from the LINZ Data Service and licensed for re-use under the Creative Commons Attribution 4.0 New Zealand licence



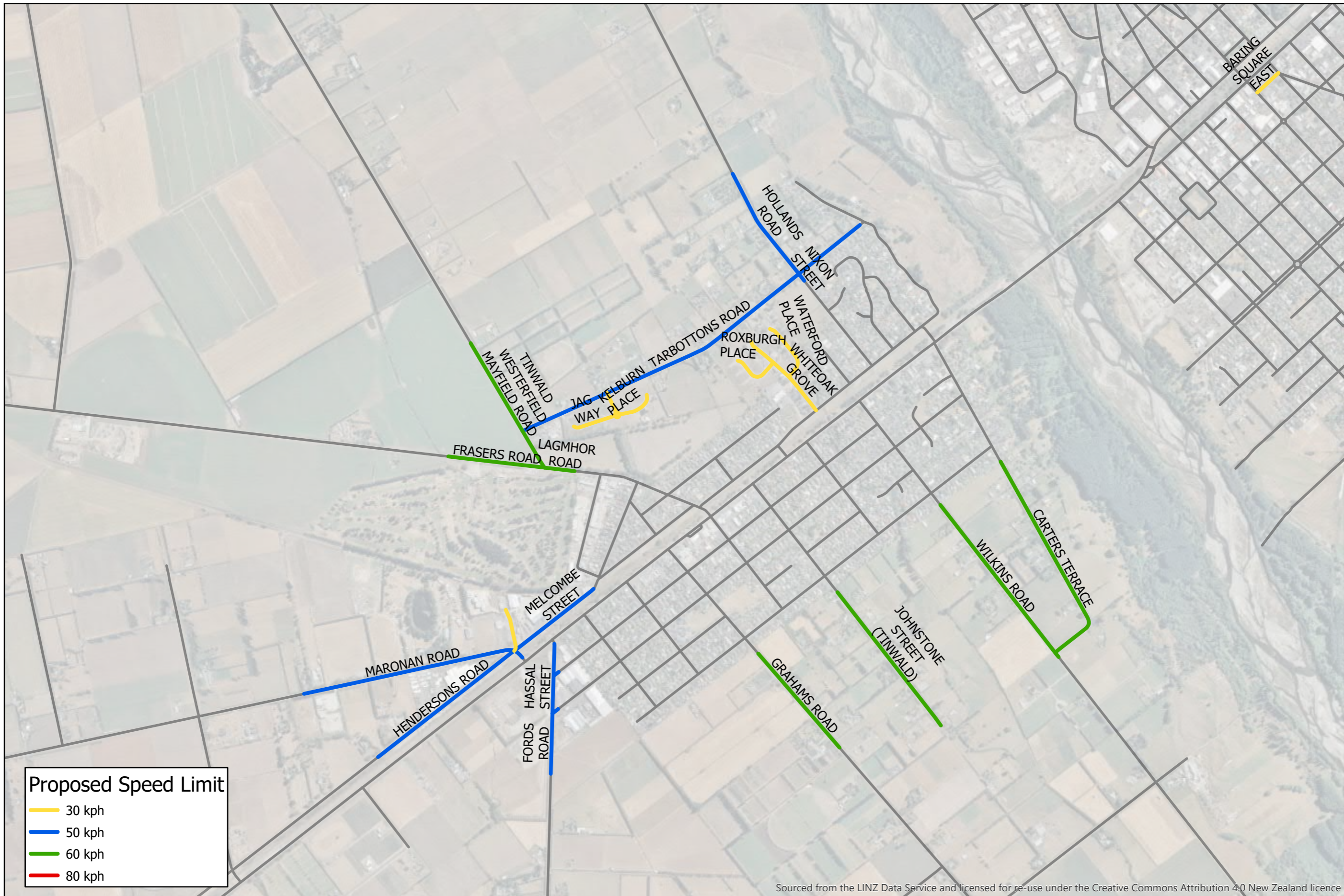
Speed Limits Review: Ashburton Business Estate

Scale 1:10,000
At A3

Disclaimer Note:

Sourced from the LINZ Data Service and licensed for re-use under the Creative Commons Attribution 4.0 New Zealand licence. The information supplied in this image is sourced from information held by Ashburton District Council. It is supplied in good faith but its accuracy or completeness is not guaranteed.





Proposed Speed Limit

- 30 kph
- 50 kph
- 60 kph
- 80 kph

Sourced from the LINZ Data Service and licensed for re-use under the Creative Commons Attribution 4.0 New Zealand licence

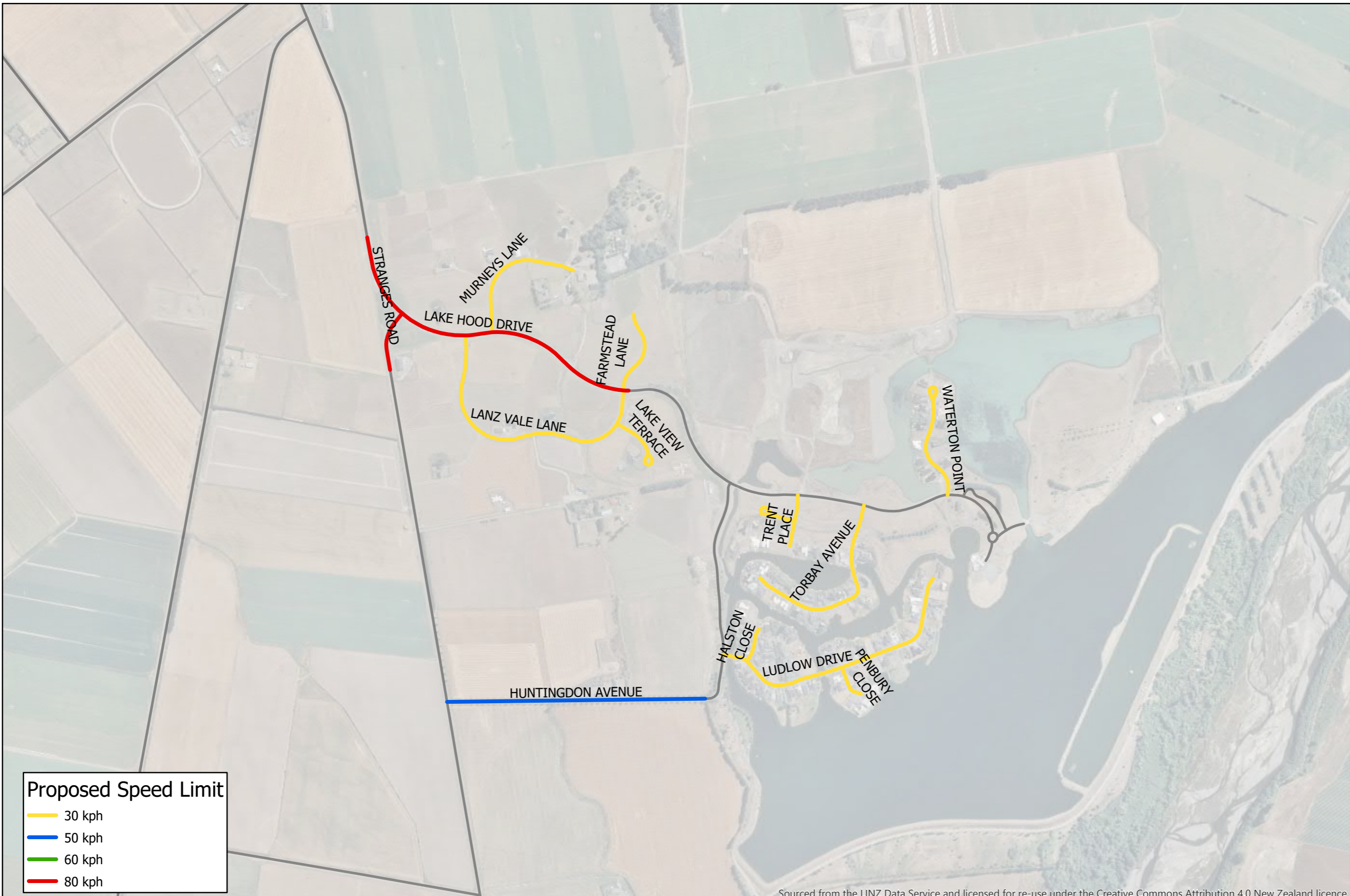


Speed Limits Review: Tinwald

Scale 1:15,000
At A3

Disclaimer Note:
Sourced from the LINZ Data Service and licensed for re-use under the Creative Commons Attribution 4.0 New Zealand licence. The information supplied in this image is sourced from information held by Ashburton District Council. It is supplied in good faith but its accuracy or completeness is not guaranteed.





Sourced from the LINZ Data Service and licensed for re-use under the Creative Commons Attribution 4.0 New Zealand licence

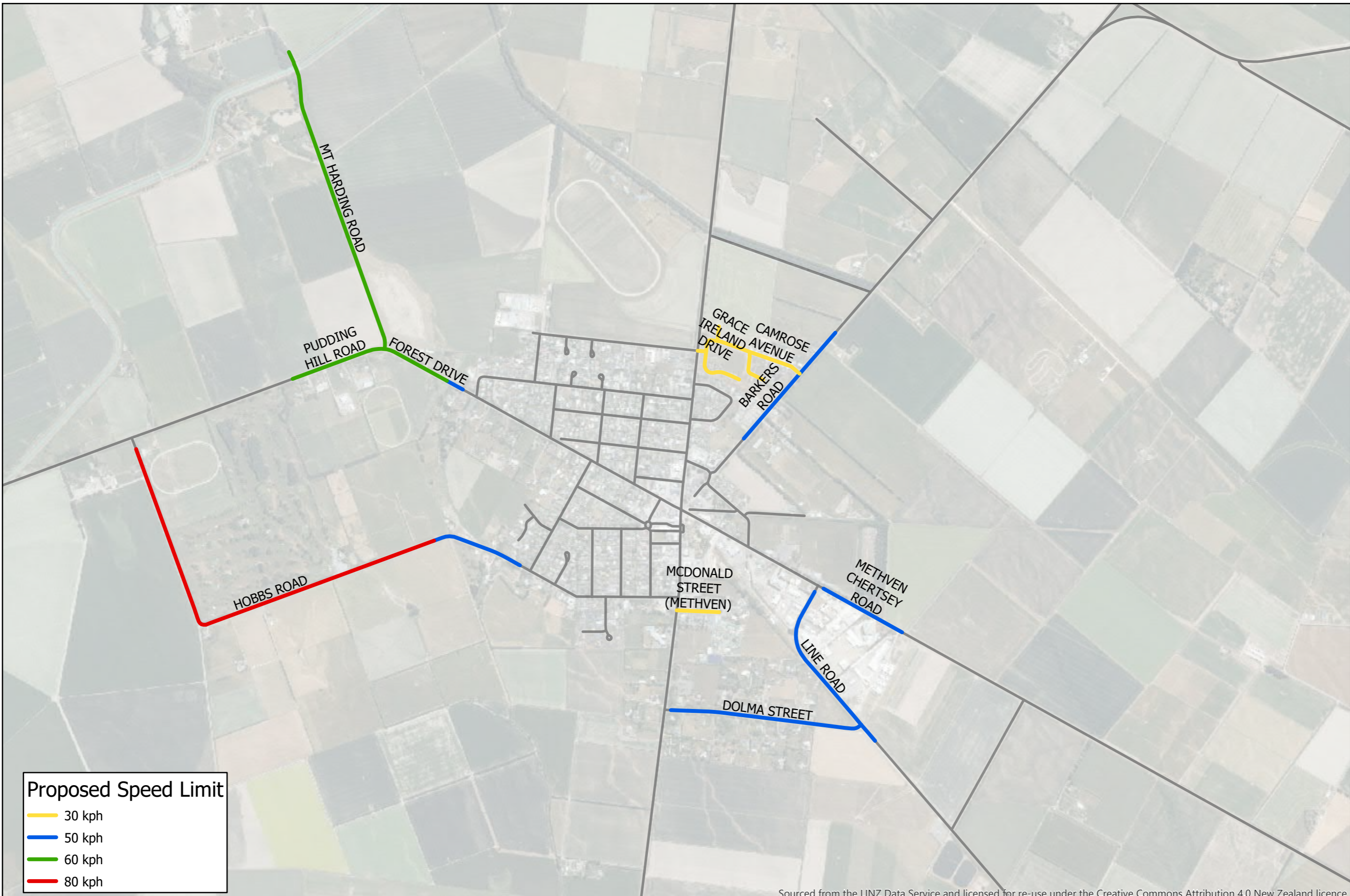


Speed Limits Review: Lake Hood

Scale 1:10,000
At A3

Disclaimer Note:
Sourced from the LINZ Data Service and licensed for re-use under the Creative Commons Attribution 4.0 New Zealand licence. The information supplied in this image is sourced from information held by Ashburton District Council. It is supplied in good faith but its accuracy or completeness is not guaranteed.





Sourced from the LINZ Data Service and licensed for re-use under the Creative Commons Attribution 4.0 New Zealand licence



Speed Limits Review: Methven

Scale 1:15,000
At A3

Disclaimer Note:
Sourced from the LINZ Data Service and licensed for re-use under the Creative Commons Attribution 4.0 New Zealand licence. The information supplied in this image is sourced from information held by Ashburton District Council. It is supplied in good faith but its accuracy or completeness is not guaranteed.





Sourced from the LINZ Data Service and licensed for re-use under the Creative Commons Attribution 4.0 New Zealand licence

Proposed Speed Limit

- 30 kph
- 50 kph
- 60 kph
- 80 kph



Speed Limits Review: Rakaia

Scale 1:10,000
At A3

Disclaimer Note:
Sourced from the LINZ Data Service and licensed for re-use under the Creative Commons Attribution 4.0 New Zealand licence. The information supplied in this image is sourced from information held by Ashburton District Council. It is supplied in good faith but its accuracy or completeness is not guaranteed.





Proposed Speed Limit

- 30 kph
- 50 kph
- 60 kph
- 80 kph

Sourced from the LINZ Data Service and licensed for re-use under the Creative Commons Attribution 4.0 New Zealand licence

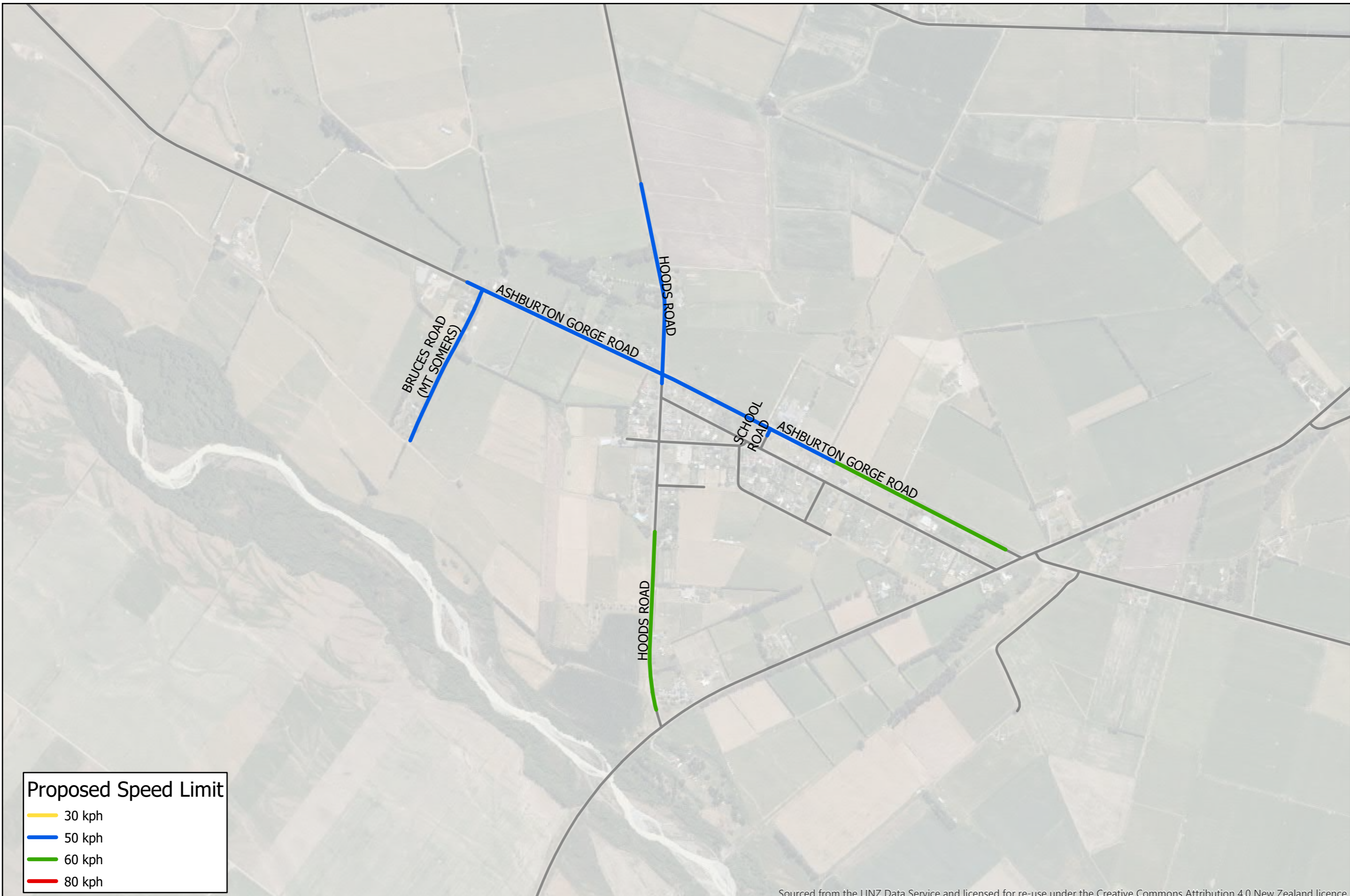


Speed Limits Review: Lauriston

Scale 1:5,000
At A3

Disclaimer Note:
Sourced from the LINZ Data Service and licensed for re-use under the Creative Commons Attribution 4.0 New Zealand licence. The information supplied in this image is sourced from information held by Ashburton District Council. It is supplied in good faith but its accuracy or completeness is not guaranteed.





Proposed Speed Limit

- 30 kph
- 50 kph
- 60 kph
- 80 kph

Sourced from the LINZ Data Service and licensed for re-use under the Creative Commons Attribution 4.0 New Zealand licence



Speed Limits Review: Mt Somers

Scale 1:10,000
At A3

Disclaimer Note:
Sourced from the LINZ Data Service and licensed for re-use under the Creative Commons Attribution 4.0 New Zealand licence. The information supplied in this image is sourced from information held by Ashburton District Council. It is supplied in good faith but its accuracy or completeness is not guaranteed.





Sourced from the LINZ Data Service and licensed for re-use under the Creative Commons Attribution 4.0 New Zealand licence

Proposed Speed Limit

- 30 kph
- 50 kph
- 60 kph
- 80 kph



Speed Limits Review: Mayfield

Scale 1:5,000
At A3

Disclaimer Note:
Sourced from the LINZ Data Service and licensed for re-use under the Creative Commons Attribution 4.0 New Zealand licence. The information supplied in this image is sourced from information held by Ashburton District Council. It is supplied in good faith but its accuracy or completeness is not guaranteed.





Sourced from the LINZ Data Service and licensed for re-use under the Creative Commons Attribution 4.0 New Zealand licence

Proposed Speed Limit

- 30 kph
- 50 kph
- 60 kph
- 80 kph

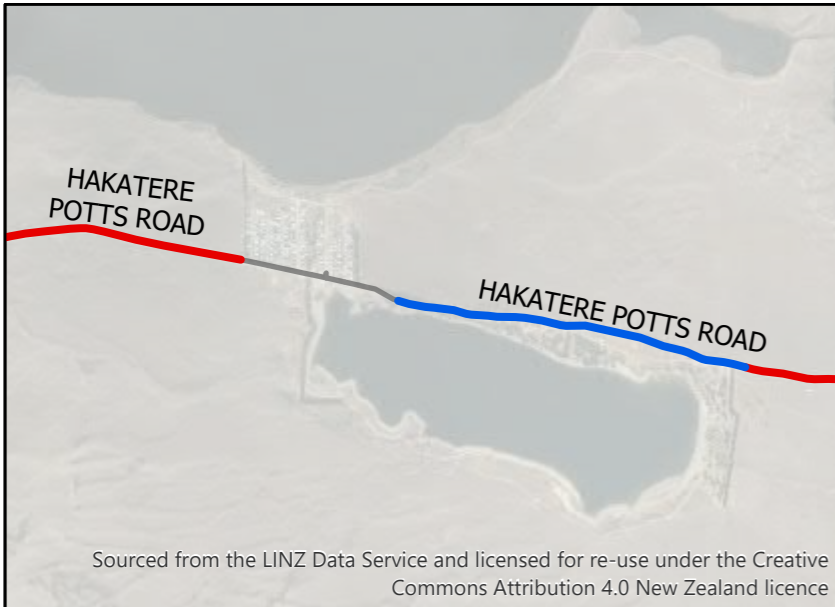


Speed Limits Review: Maronan Bridge

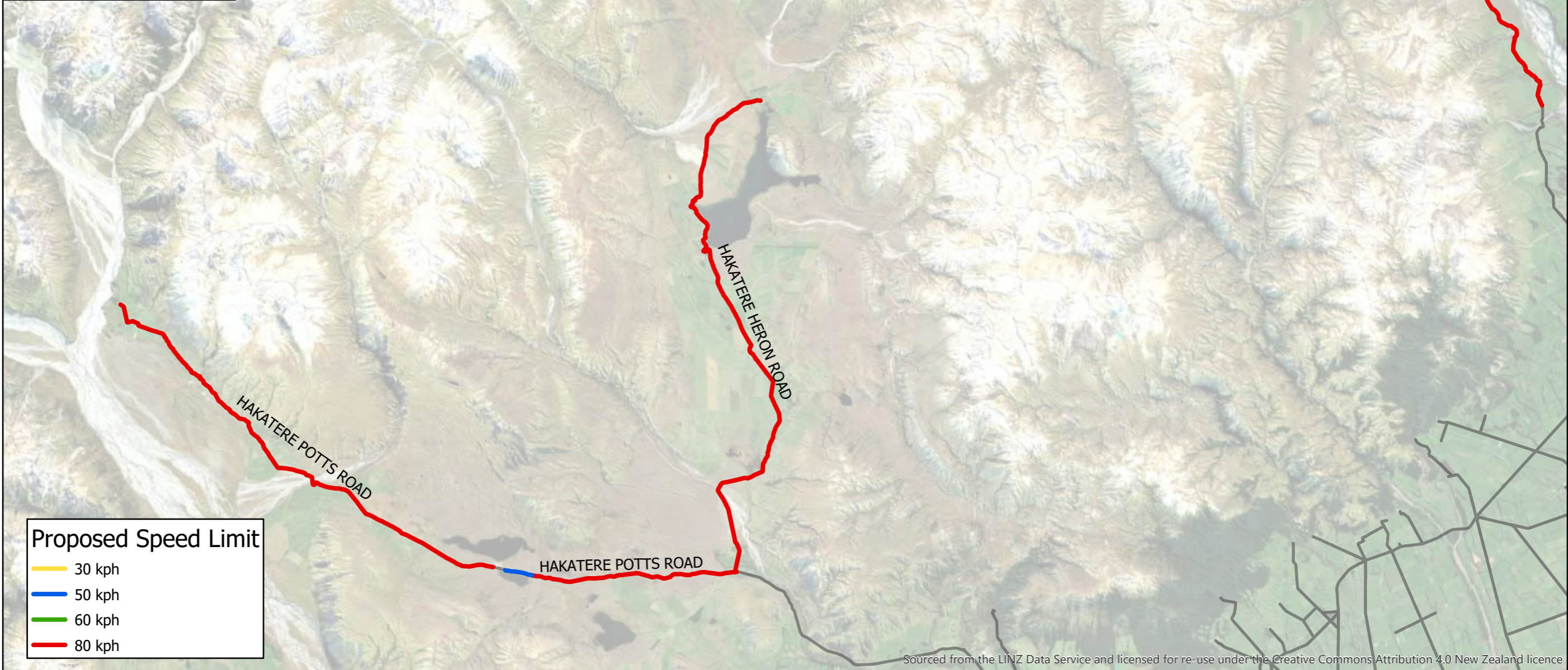
Scale 1:5,000
At A3



Disclaimer Note:
Sourced from the LINZ Data Service and licensed for re-use under the Creative Commons Attribution 4.0 New Zealand licence. The information supplied in this image is sourced from information held by Ashburton District Council. It is supplied in good faith but its accuracy or completeness is not guaranteed.



Scale 1:24,000



Proposed Speed Limit

- 30 kph
- 50 kph
- 60 kph
- 80 kph



Speed Limits Review: Rural

Scale 1:175,000
At A3

Disclaimer Note:
Sourced from the LINZ Data Service and licensed for re-use under the Creative Commons Attribution 4.0 New Zealand licence. The information supplied in this image is sourced from information held by Ashburton District Council. It is supplied in good faith but its accuracy or completeness is not guaranteed.

